

INOA (NAME): \_\_\_\_\_

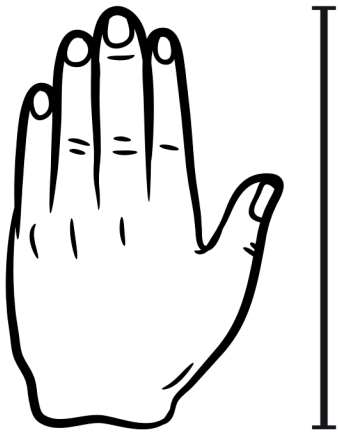
# MEASURING USING NĀ ANAKAHI HAWAI'I

## (NATIVE HAWAIIAN MEASUREMENT SYSTEM)

In the days of old Hawai'i, there were no rulers or measuring tape to measure how long, wide, or tall an item was. Instead, Native Hawaiians used their hands and arms to measure.

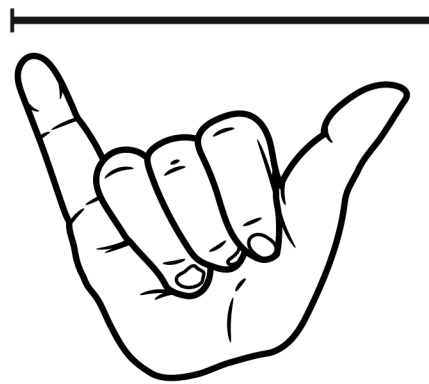
Here are some examples:

### PĪ'Ā



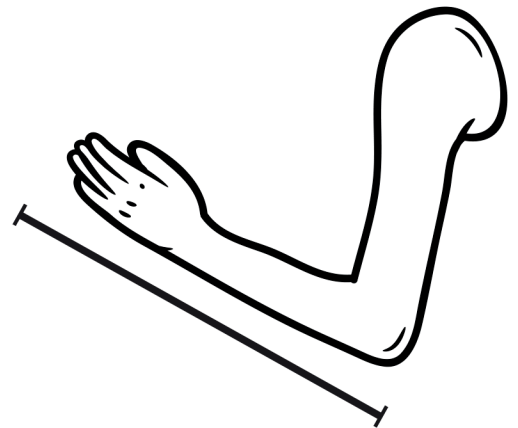
Measuring using the size of your hand from wrist to top of the tallest finger. Hold your hand right side up to measure how long or tall an item is and turn it sideways to measure how wide it is. This measurement is good for measuring plants on the first day of planting.

### KAULUA



Measuring using the size of your shaka. Turn your shaka with your thumb at the top and pinky at the bottom to measure length or height, and turn it sideways to measure how wide it is. This measurement is good to use as your plant gets taller.

### HA'ILIMA



Measuring using the size of your arm from elbow to top of the tallest finger. This type of measurement is good for measuring items that are very long, like vines.

Work with a partner and measure how tall you are in pī'ā, kaulua, ha'ilima

**PĪ'Ā:** \_\_\_\_\_

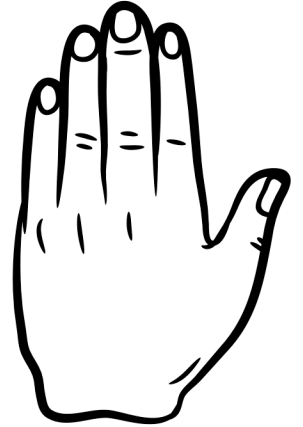
**KAULUA:** \_\_\_\_\_

**HA'ILIMA:** \_\_\_\_\_

# NĀ ANAKAHI HAWAI'I

Walk around the classroom and find 3 items that you would measure using the Nā Anakahi Hawai'i

3 ITEMS THAT YOU WOULD MEASURE USING **PĪ'Ā**



2 ITEMS THAT YOU WOULD MEASURE USING **KAULUA**



1 ITEM THAT YOU WOULD MEASURE USING **HA'ILIMA**

